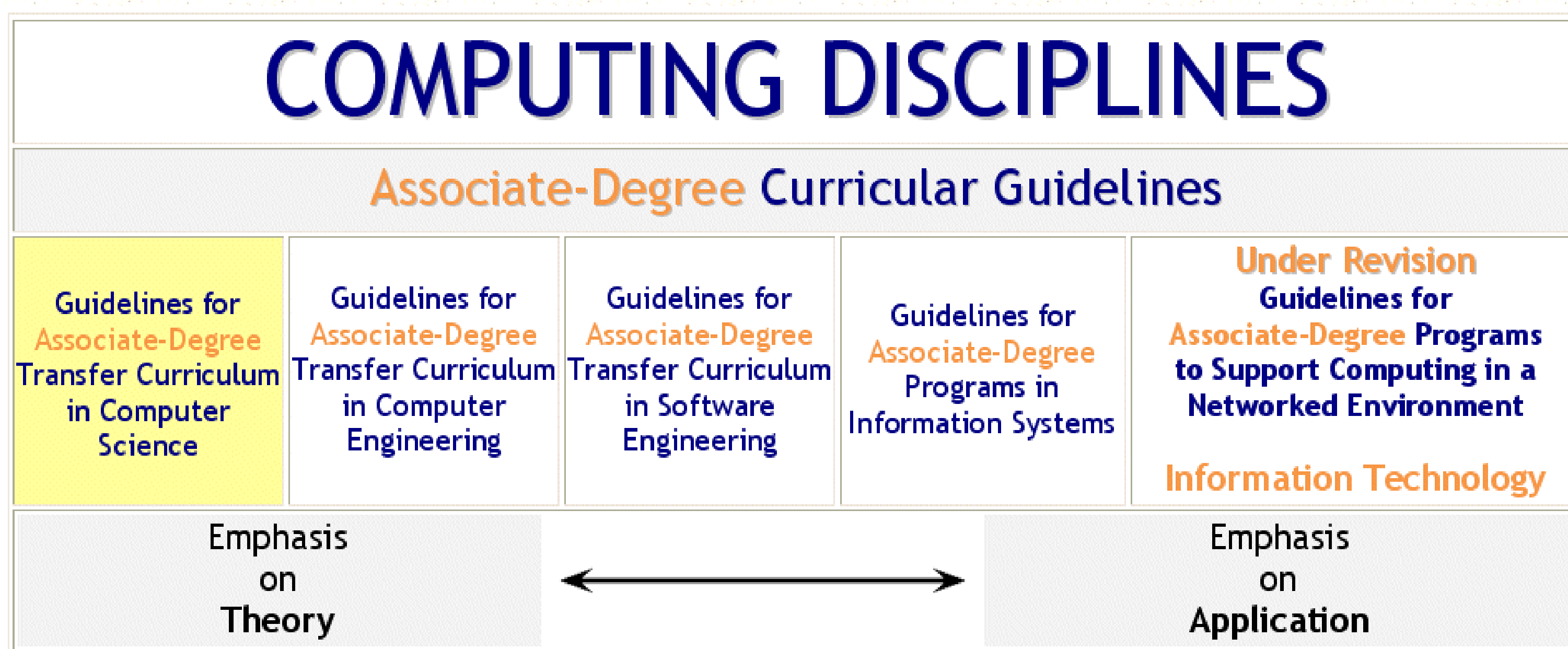




Revised Associate-Level Curricular Guidelines in Computer Science

Some Significant Features

- ◆ Inclusion of student learning outcomes reflecting updated content for the CS I, CS II, and CS III course sequence.
- ◆ Detailed student assessment at both the program and course levels.
- ◆ Explicit progressive integration of security, software engineering, HCI, ethics and professionalism topics in the three-course sequence.
- ◆ Shift from three computing paradigms to a blended approach that promotes OOP principles.
- ◆ Updated mathematics recommendations.
- ◆ Expanded list of computing and mathematics elective courses.
- ◆ Relationship to the computer science Body of Knowledge as well as the Computing Ontology.
- ◆ Expanded Bloom's Taxonomy to include both cognitive and affective domains.
- ◆ Articulation considerations with *Computer Science Curriculum 2008 Update: An Interim Revision of CS 2001*
www.acm.org/education/curricula/ComputerScience2008.pdf



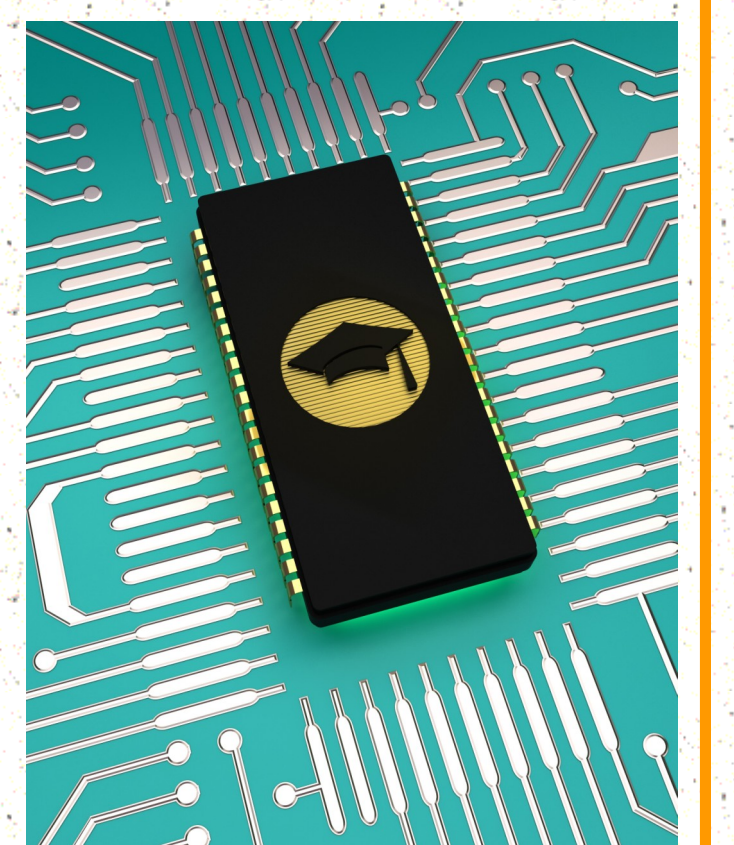
Associate Degrees
 are completion points after the first two years of college study, leading to either

- ⇒ Transfer into the upper division of a BA or BS program (*AA or AS degree*)
- ⇒ Employment as a technology professional (*AAS degree*)

Currently Under Development

CAP Space www.capspace.org

- ◆ Web 2.0-based information repository for two-year college computing *Curricula*, *Assessment* and *Pedagogy*
- ◆ Designed for computing educators, prospective students, parents and advisors
- ◆ New interactive format is user-friendly and flexible, replacing the static PDF document format
- ◆ Will feature an integrated collection of associate-level computing curricula including CS, CE, SE, IS, IT and emerging computing disciplines – eliminating the 'silos' of computing curricula
- ◆ Will provide a community of practice for educators; promoting participation in online moderated discussions as well as contribution of resources to the repository
- ◆ Will allow users to select topics of interest and generate custom reports
- ◆ Will launch in 2009 with the revised *Computer Science Transfer Guidelines*



Members of the ACM TYCEC

- ~Elizabeth K. Hawthorne, Union County College (Chair)
ehawthorne@acm.org
- ~Robert D. Campbell, CUNY Graduate Center
rcampbell@gc.cuny.edu
- ~Karl J. Klee, Alfred State College of Technology
kleekj@alfredstate.edu
- ~Anita M. Wright, Camden County College
amwright@acm.org